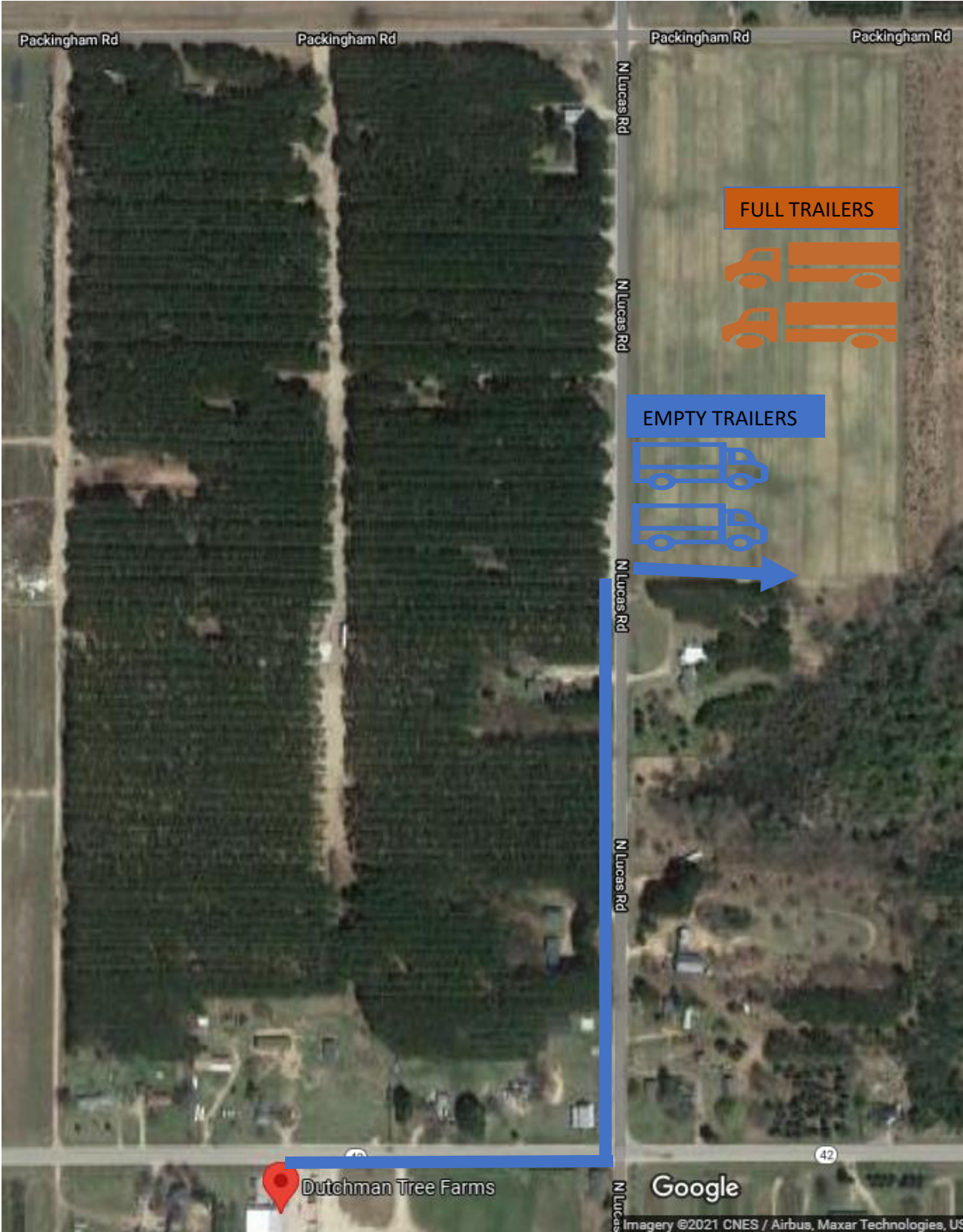


# Dropped Trailers



## Directions:

1. If you are parked by the fence, with a RED BARN on your left:
  - a. Drive all the way around the fence to go back out to M-42 (Walker Rd)
  - b. Turn RIGHT out of the driveway onto W. Walker Rd
  - c. Turn LEFT onto the first road at LUCAS RD
  - d. ¼ Mile on the RIGHT, you will see a large gravel lot
2. If you are dropping an empty trailer:
  - a. Keep the trailer to the SOUTHWEST corner, and back in just after the last trailer in line.
3. If you are picking up a loaded trailer:
  - a. You will find the trailer on the EAST side midway up the trailer yard.
    - i. Check your paperwork to ensure it is the correct load, as well as the correct trailer number.
    - ii. If anything is incorrect, immediately contact your broker or dispatcher

**YOU WILL NEED TO CALL THE CONTACT ON THE PAPERWORK WITH AN ETA FOR DELIVERY**