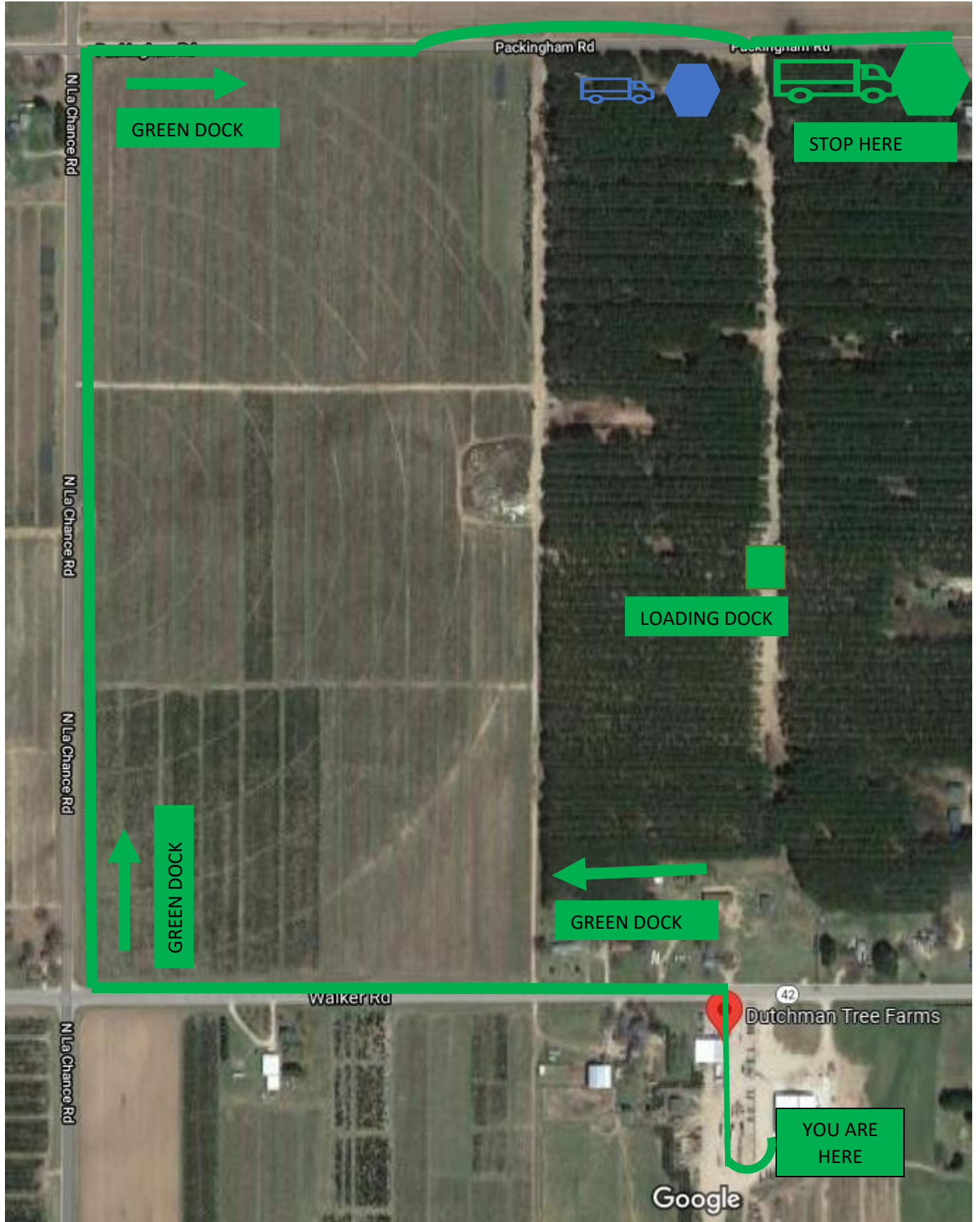


Green Dock



Directions:

1. Place the Truck Number we just gave you in your windshield, this is your loading priority number and will get you next in line to be loaded

2. If you are parked by the fence, with a RED BARN on your left:
 - a. Drive all the way around the fence to go back out to M-42 (Walker Rd)

 - b. Turn LEFT out of the driveway onto W. Walker Rd

 - c. Turn RIGHT on the first road onto N LaChance Rd

 - d. Turn RIGHT onto Packingham Rd

 - e. Go around the stop sign for the blue dock.

 - f. Continue to the stop sign on LUCAS RD, and park behind the last truck in line prior to the GREEN DOCK stop sign.

3. The loading crew will pull your number when you are next in line and show you where to go.