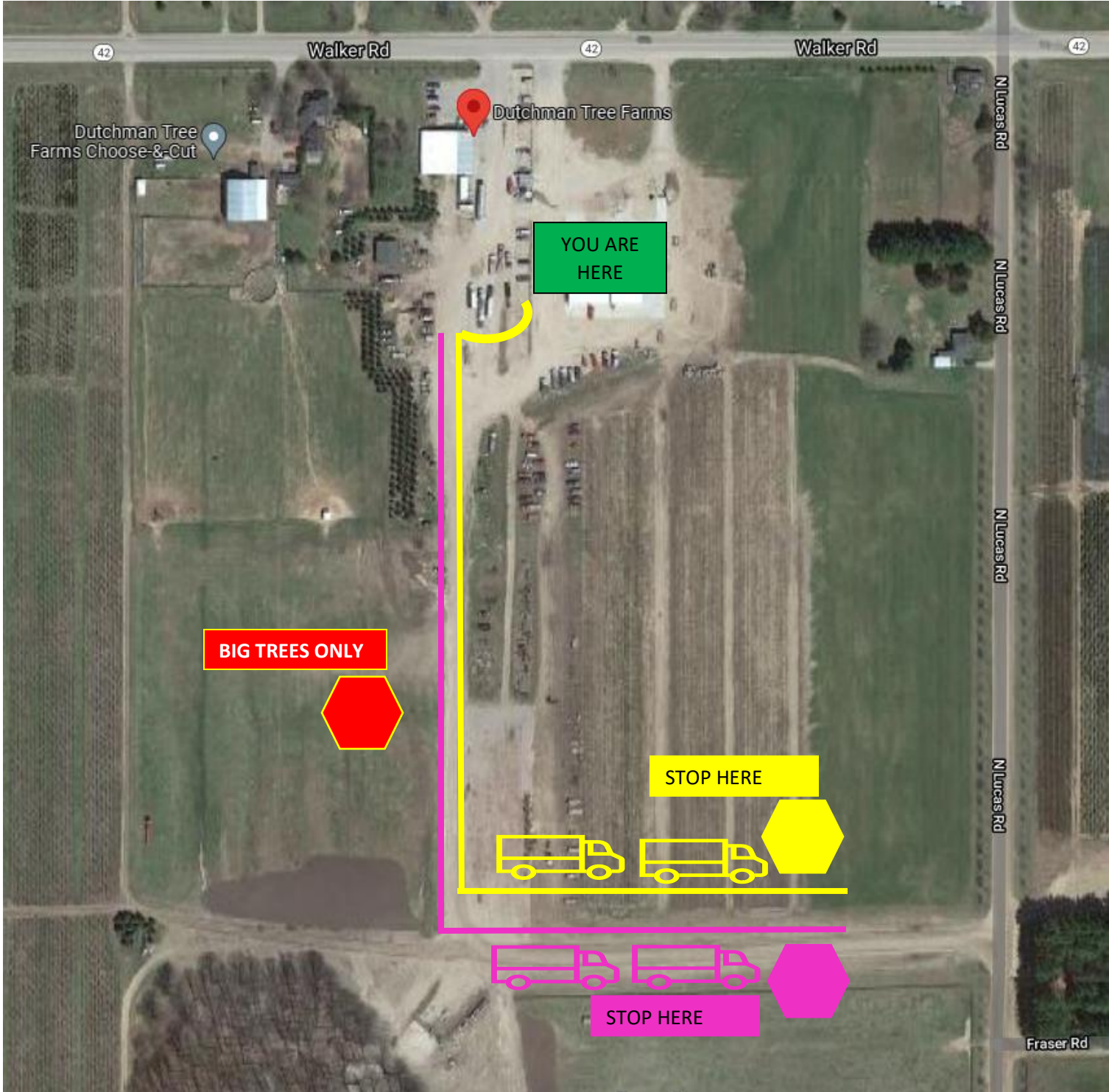


Hand Load (Yellow Dock)

Pink Dock



Directions:

1. Place the Truck Number we just gave you in your windshield, this is your loading priority number and will get you next in line to be loaded
2. If you are parked by the fence, with a RED BARN on your left:
 - a. Drive around the fence and turn LEFT to go south of the office
 - i. If you were told to stop at the BIG TREES, pull to the RIGHT of the roadway behind the last truck and wait for the loading crew.
 - b. Go all the way to the end of the roadway, and turn LEFT
 - i. For YELLOW DOCK (Hand Loads):
 1. Keep to the LEFT of the road and park behind the last truck.
 - ii. For PINK DOCK:
 1. Keep to the RIGHT of the road and park behind the last truck.
3. The loading crew will pull your number when you are next in line and show you where to go.